



ReyLuc CABLE LUG FOR COMPACT CABLE

KEY FEATURES

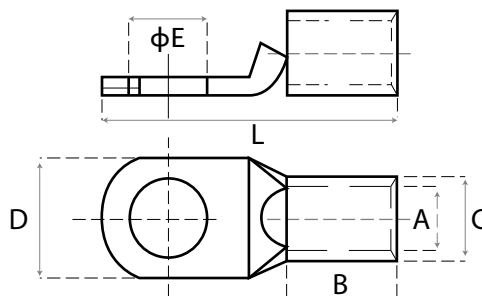
- BELL ENTRY TERMINALS TO FACILITATE EASY CABLE ENTRY
- PROVIDED WITH INSPECTION WINDOW, THUS ENSURING FULL CONDUCTOR INSERTION; WHILST THE BARREL LENGTH HAS BEEN DESIGNED TO ALLOW EASY AND ACCURATE POSITIONING OF THE DIES DURING CRIMPING OPERATION
- METICULOUSLY DESIGNED TUBE DIMENSION THAT ENSURES OPTIMUM ELECTRICAL CONDUCTIVITY AND MECHANICAL STRENGTH TO RESIST VIBRATION AND PULL-OUT

MATERIALS/FINISH

- HIGH CONDUCTIVITY SEAMLESS COPPER TUBE WHICH CONFORMS TO BS2874-C 101ASTM B 152-C11000
- ELECTROLYTICALLY TIN-PLATED TO AVOID OXIDATION



ITEM NO	DIMENSIONS					
	ϕE	C	A	D	B	L
RC1.5-5	5.2	3.7	1.8	10	5	17
RC2.5-5	5.2	4	2.4	8	7	20
RC2.5-6	6.5	4	2.4	10	7	20
RC4-5	5.2	4.8	3.1	8.3	7	20
RC4-6	6.5	4.8	3.1	10	7	20
RC6-6	6.5	5.5	3.8	10	9	24
RC6-8	8.4	5.5	3.8	12.5	9	26
RC10-6	6.5	6.2	4.5	10.5	9	25
RC10-8	8.4	6.2	4.5	12.5	9	27
RC16-8	8.3	7	5.4	11.6	10.5	31
RC16-10	10.3	7	5.4	15	10.5	31
RC25-8	8.3	9	7	13.2	14	35
RC25-10	10.3	9	7	16	14	35
RC35-8	8.3	10	8	14.7	14.5	38
RC35-10	10.3	10	8	14.7	14.5	38
RC50-10	10.3	11	9	16.5	15	41
RC50-12	12.8	11	9	19.3	15	41
RC70-10	10.3	14	11.6	20.8	19	51
RC70-12	13	14	11.6	20.8	19	51
RC95-10	10.5	16	13	23.7	20.5	55
RC95-12	13	16	13	23.7	20.5	55
RC120-10	10.5	18	15	28.7	23	61
RC120-12	13	18	15	28.7	23	61
RC150-10	10.5	20	16	29.3	24	61.5
RC150-12	13	20	16	29.6	24	61.5
RC150-16	17	20	16	29.6	24	61.5
RC185-16	17	22	17.2	32.4	26	69.5
RC240-16	17	25	20	36.5	28.5	74.5
RC300-16	17	30	23.5	43	42	98
RC400-16	17	32	25.6	46.8	40.5	100
RC500-20	20	36	28	51.5	49	120
RC630-20	21	45	35	65	56	140



* VARIOUS SPECIAL HOLE SIZES ON REQUEST