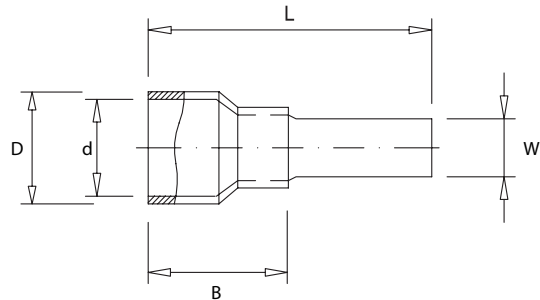


INSULATED FLAT PIN (BLADE) TERMINALS

Insulated Flat-pin (Blade) terminal

PIN type terminals are made from tinned-plated copper insulated with PVC.



Type	DIMENSIONS						WIRE RANGE		
	W	ØD	Ød	T	B	L	AWG/MCM	Single mm ²	Twine mm ²
PIN1.25F-10	2.3	4.0	1.7	0.8	10.5	20.9	22-16	0.57-1.44	0.25-1.65
PIN1.25F-14	2.3	4.0	1.7	0.8	10.5	24.9	22-16	0.57-1.44	0.25-1.65
PIN1.25F-18	2.3	4.0	1.7	0.8	10.4	28.4	22-16	0.57-1.44	0.25-1.65
PIN2F-13	2.3	4.6	2.3	0.8	10.4	23.4	16-14	1.44-1.82	1.04-2.63
PIN2F-18	2.3	4.6	2.3	0.8	10.4	28.4	16-14	1.44-1.82	1.04-2.63
PIN5.5F-10	3.0	6.9	3.5	1.0	13.5	23.0	12-10	1.82-2.98	2.63-4.60
PIN5.5F-18	3.0	6.9	3.5	1.0	13.5	31.5	12-10	1.82-2.98	2.63-4.60



Reyluc