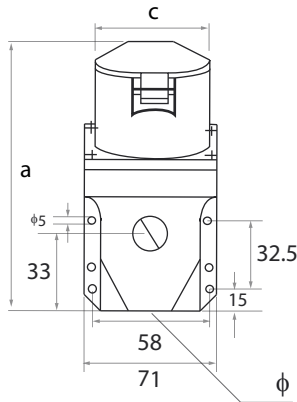
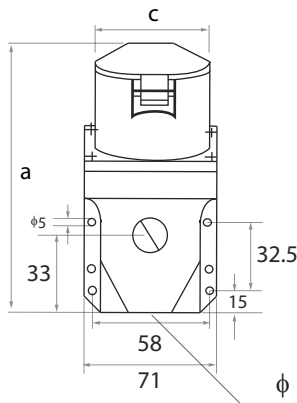




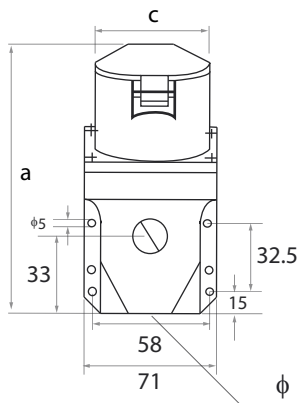
S113-6
S123-6
Voltage(V) : 220-240V
Protection degree : IP44
b = height



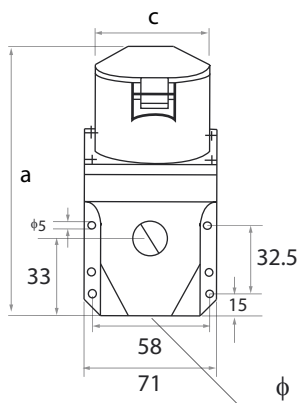
S114-6
S124-6
Voltage(V) : 380-415V
Protection degree : IP44
b = height



S115-6
S125-6
Voltage(V) : 220-415V
Protection degree : IP44
b = height



S113-4
S123-4
Voltage(V) : 110-130V
Protection degree : IP44
b = height



Earth contact position	6h		
Rated current (A)	16	32	
	Pole 2		
Dimension (mm)	a	135	153
	b	92	102
	c	50	65
	φ	3-18	3-18
Cable nominal cross-section area (mm ²)	1-2.5	2.5-6	

Earth contact position	6h		
Rated current (A)	16	32	
	Pole 3		
Dimension (mm)	a	140	152
	b	95	104
	c	56	65
	φ	3-18	3-18
Cable nominal cross-section area (mm ²)	1-2.5	2.5-6	

Earth contact position	6h		
Rated current (A)	16	32	
	Pole 4		
Dimension (mm)	a	139	153
	b	96	107
	c	63	70
	φ	3-18	3-18
Cable nominal cross-section area (mm ²)	1-2.5	2.5-6	

Earth contact position	4h		
Rated current (A)	16	32	
	Pole 2		
Dimension (mm)	a	135	153
	b	92	102
	c	50	65
	φ	3-18	3-18
Cable nominal cross-section area (mm ²)	1-2.5	2.5-6	