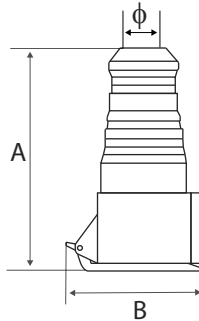




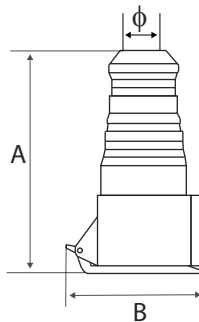
C213-6
C223-6
Voltage(V) : 220-240V
Protection degree : IP44



Earth contact position	6h	
Rated current (A)	16	32
	Pole 2	
Dimension (mm)	a	131
	b	69
	φ	6-16
Cable nominal cross-section area (mm ²)	1-2.5	2.5-6



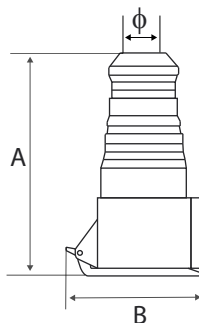
C214-6
C224-6
Voltage(V) : 380-415V
Protection degree : IP44



Earth contact position	6h	
Rated current (A)	16	32
	Pole 3	
Dimension (mm)	a	131
	b	79
	φ	6-16
Cable nominal cross-section area (mm ²)	1-2.5	2.5-6



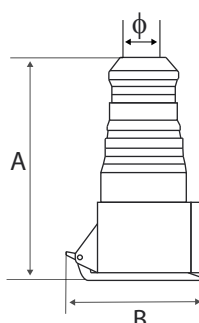
P015-6
P025-6
Voltage(V) : 380-415V
Protection degree : IP44



Earth contact position	6h	
Rated current (A)	16	32
	Pole 4	
Dimension (mm)	a	141
	b	93
	φ	8-20
Cable nominal cross-section area (mm ²)	1-2.5	2.5-6



P013-4
P023-4
Voltage(V) : 110-130V
Protection degree : IP44



Earth contact position	4h	
Rated current (A)	16	32
	Pole 2	
Dimension (mm)	a	131
	b	69
	φ	6-16
Cable nominal cross-section area (mm ²)	1-2.5	2.5-6