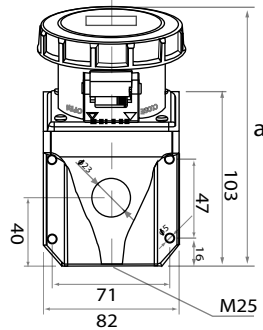




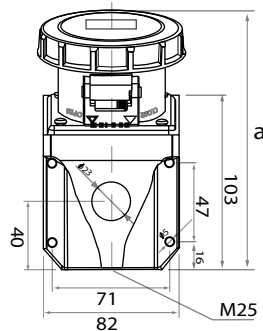
TS1132-6
 TS1232-6
 Voltage(V) : 220-240V
 Protection degree : IP67



b = height
 angle = 15°



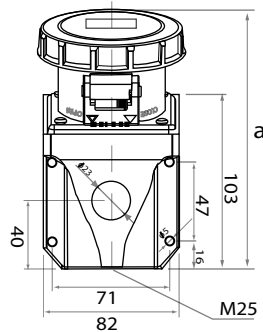
TS1142-6
 TS1242-6
 Voltage(V) : 380-415V
 Protection degree : IP67



b = height
 angle = 15°



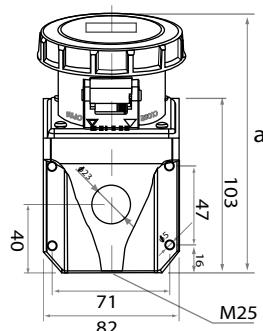
TS1152-6
 TS1252-6
 Voltage(V) : 220-415V
 Protection degree : IP67



b = height
 angle = 15°



TS1242-3
 Voltage(V) : 380-415V
 Protection degree : IP67
 (For Container use)



b = height
 angle = 15°

Earth contact position	6h	
Rated current (A)	16	32
	Pole 2	
Dimension (mm)	a	155
	b	99
Cable nominal cross-section area (mm ²)	1-2.5	2.5-6

Earth contact position	6h	
Rated current (A)	16	32
	Pole 3	
Dimension (mm)	a	155
	b	101
Cable nominal cross-section area (mm ²)	1-2.5	2.5-6

Earth contact position	6h	
Rated current (A)	16	32
	Pole 4	
Dimension (mm)	a	155
	b	106
Cable nominal cross-section area (mm ²)	1-2.5	2.5-6

Earth contact position	3h	
Rated current (A)	32	
	Pole 3	
Dimension (mm)	a	170
	b	108
Cable nominal cross-section area (mm ²)	2.5-6	