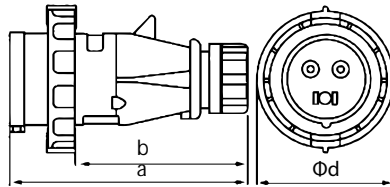


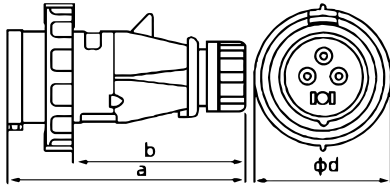
AJ0131  
AJ0231  
Voltage(V) : 220-240V  
Protection degree : IP67



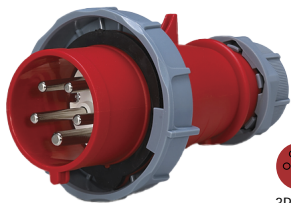
Earth contact position	6h		
Rated current (A)	16	32	
	Pole 3		
Dimension (mm)	a	138	170
	b	115	141
	d	70.2	93.3
Cable nominal cross-section area (mm <sup>2</sup> )	1-2.5	2.5-6	



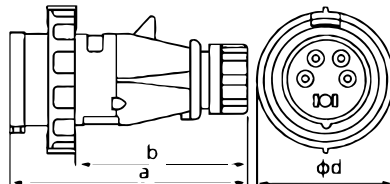
AJ0141  
AJ0241  
Voltage(V) : 380-415V  
Protection degree : IP67



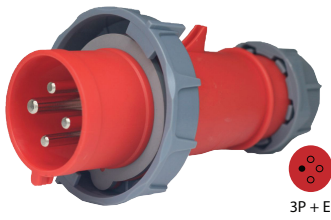
Earth contact position	6h		
Rated current (A)	16	32	
	Pole 4		
Dimension (mm)	a	144	170
	b	120.5	141
	d	78	93.3
Cable nominal cross-section area (mm <sup>2</sup> )	1-2.5	2.5-6	



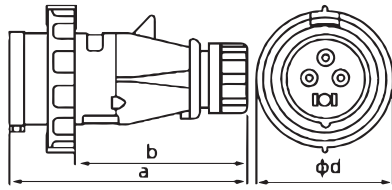
AJ3152  
AJ3251  
Voltage(V) : 220-380V  
240-415V  
Protection degree : IP67



Earth contact position	6h		
Rated current (A)	16	32	
	Pole 5		
Dimension (mm)	a	144	177
	b	120.5	148
	d	87	101
Cable nominal cross-section area (mm <sup>2</sup> )	1-2.5	2.5-6	



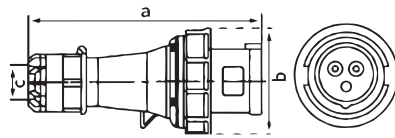
AJ0241-3hr  
Voltage(V) : 380-415V  
Protection degree : IP67



Earth contact position	3h	
Rated current (A)	32	
	Pole	4
Dimension (mm)	a	170
	b	141
	d	93.3
Cable nominal cross-section area (mm <sup>2</sup> )	2.5-6	



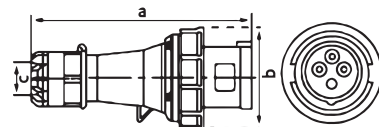
AJ0332  
Voltage(V) : 220-240V  
Protection degree : IP67



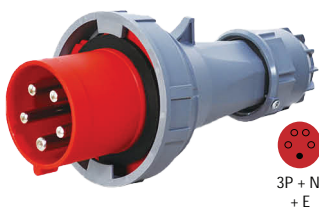
Earth contact position	6h	
Rated current (A)	63	
	Pole	3
Dimension (mm)	a	250
	b	115
	d	23
Cable nominal cross-section area (mm <sup>2</sup> )	6-16	



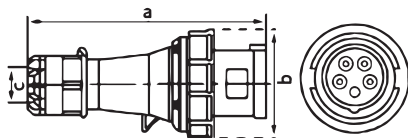
AJ0342  
AJ0442  
Voltage(V) : 380-415V  
Protection degree : IP67



Earth contact position	6h	
Rated current (A)	63	125
	Pole	4
Dimension (mm)	a	250
	b	115
	d	23
Cable nominal cross-section area (mm <sup>2</sup> )	6-16	16-50



AJ0352  
AJ0452  
Voltage(V) : 220-380V  
240-415V  
Protection degree : IP67



Earth contact position	6h	
Rated current (A)	63	125
	Pole	5
Dimension (mm)	a	250
	b	115
	d	23
Cable nominal cross-section area (mm <sup>2</sup> )	6-16	16-50