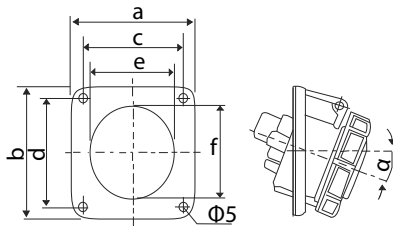


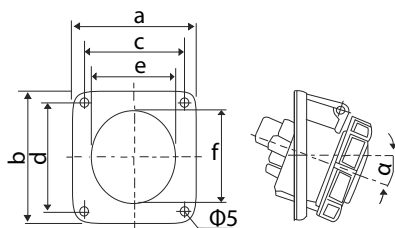
AJ3131
AJ3232
Voltage(V) : 220-240V
Protection degree : IP67

Earth contact position	6h		
Rated current (A)	16	32	
	Pole 3		
Dimension (mm)	a	64	93
	b	75	101
	c	52	77
	d	60	85
	e	50	73
	f	60	86
Cable nominal cross-section area (mm ²)	1-2.5	2.5-6	



AJ3142
AJ3241
Voltage(V) : 380-415V
Protection degree : IP67

Earth contact position	6h		
Rated current (A)	16	32	
	Pole 4		
Dimension (mm)	a	93	93
	b	101	101
	c	77	77
	d	85	85
	e	73	73
	f	86	86
Cable nominal cross-section area (mm ²)	1-2.5	2.5-6	



AJ3152
AJ3251
Voltage(V) : 220-380V
240-415V
Protection degree : IP67

Earth contact position	6h		
Rated current (A)	16	32	
	Pole 5		
Dimension (mm)	a	93	93
	b	101	101
	c	77	77
	d	85	85
	e	73	73
	f	86	86
Cable nominal cross-section area (mm ²)	1-2.5	2.5-6	